

**SMG**

**High performance machines  
for plastic strapping**



SMG 10 / 15



SMG 25 / 20S / 25S



SMG 50 / 55



SMG 65



SMG 65i / 75i



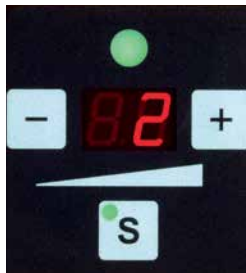
# The new SMG Generation

## From the stand alone machine to fully automatic production lines

### 5 Highlights

- Up to 70 cycles per minute
- Touch Panel: Strap tension easily adjustable
- Simple technology, few moving parts
- Constant strap tension for various products
- Simple coil change

### Easy operation, cost effective, easy to maintain



Easy operation:  
Strap tension adjustable with press button



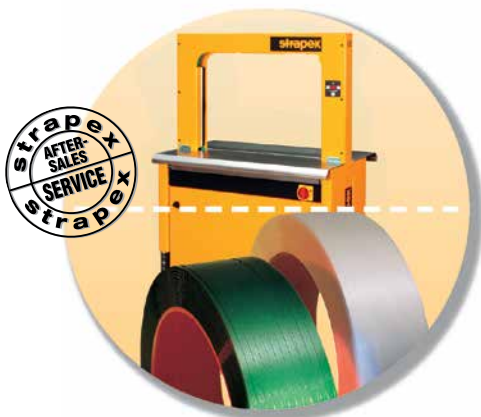
Simple coil change:  
Minimum downtime for coil change thanks to automatic strap threading



Easily accessible,  
maintenance without tools

### Strapex advantage

Machine, strap and after-sales service as a total package



### Save money with the right choice of strap

Avoid high costs of using over dimensioned straps. The Strapex range of SMG

machines allow the use of thin and flexible PP straps, which are available in the

perfect dimensions to meet your specific packaging needs.



# SMG 10 / 15 / 25 / 20S / 25S

## Semi-automatic machines for small to large packages



**SMG 10/15**  
With integrated dispenser



**SMG 25**  
With side-mounted dispenser



**SMG 20S / 25S**  
The ideal machines for small and narrow products

As stand alone machine or for integration into conveyor systems



# SMG 50 (A) / 55 (A) / 56 / 57

## Fully automatic machines with integrated conveyor

For integration into conveyor systems

Touch Panel:  
Self-explaining, no special knowledge necessary

Strap tension easily adjustable with push buttons – with a selection of standard strapping modes

Conveyor speed fully adjustable

The package position for strapping is adjusted by a photocell

High availability and reliability of operation

**SMG 50 / 55**  
Also available with asymmetric seal position (A)



SMG 56 / 57



# SMG 65 / 65S / 65i / 75i

## Side seal machines for large and heavy packages

For integration into conveyor systems or as stand alone machine with non-driven rollers

For continuous operation

Easy operation, self-explaining

Robust, compact design

**SMG 65**  
For large and heavy packages



**SMG 65S**  
With special pressure plates for small and narrow packages



**SMG 75i**  
Stainless steel version  
For the food industry with integrated conveyor



**SMG 65i**  
Stainless steel version  
For the food industry, stand alone or integrateable



# Options

## Adaptable to different operating conditions and requirements



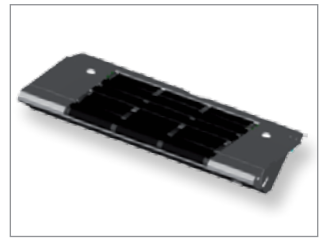
**Hold down device** to compress packages and loose bundles



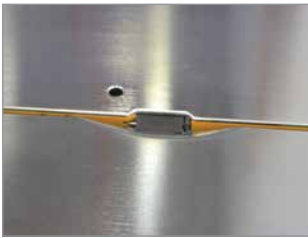
**Package/Bundle stops** to position loose bundles or packages



**Photocell** - Second strapping tension, package height control



**Conveyor extension**



**Cycle start triggered by photocell**



**Second foot pedal**



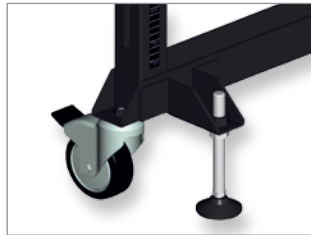
**Support roller**



**Roller table**



**Interface** for integration into existing production lines



**Fixable feet** - fixed to the ground by adjustable feet



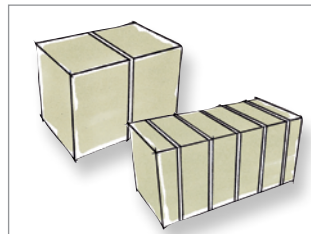
**Foot switch** with protection cover



**Signal lamp** triple or quadruple



**Strap end pre-warning**



**Several program options**

### Further options

#### CT Version (Cold and Tropical Environment)

Room temperature:  
5–40°C

Relative humidity of air:  
10–85%

- Stainless feet and guide rolls
- Stainless table
- Basic frame with special colour treatment

Other options on request

Technical data	SMG 10	SMG 15	SMG 25	SMG 20S	SMG 25S	SMG 50	SMG 55	SMG 65	SMG 65i	SMG 75i
Strap width, mm	5/6	9/12	9/12	5/6	9/12	5/6	(SMG 56/57) 9/12	9/12	9/12	9/12
Dispenser position	Integrated	Integrated	Side mounted	Side mounted	Side mounted	Side mounted	Side mounted	Top mounted	Top mounted	Top mounted
Performance per minute	70 cycles	70 cycles	60 cycles	70 cycles	65 cycles	70 cycles*	65 cycles*	65 cycles	65 cycles	65 cycles
Working height, mm	820–930	820–930	820–930	820–930	820–930					
Conveyor height, mm						720–950	720–950			
Seal height, mm								560–1040	580–1060	580–1060
Electricity supply	230 V, 50 Hz	230 V, 50 Hz	230 V, 50 Hz	230 V, 50 Hz	230 V, 50 Hz	230 V, 50 Hz	230 V, 50 Hz	230 V, 50 Hz	230 V, 50 Hz	230 V, 50 Hz
Strap tension, up to N	300	450	450	300	450	300	450 (600)	450 (600)	600	600
Heat seal	•	•	•	•	•	•	•	•	•	•
Room temperature	10–40°C	10–40°C	10–40°C	10–40°C	10–40°C	10–40°C	10–40°C	10–40°C	5–40°C	5–40°C
Relative humidity of air	10–65%	10–65%	10–65%	10–65%	10–65%	10–65%	10–65%	10–65%	10–85%	10–85%
Emission sound pressure level	79 dB (A)	79 dB (A)	79 dB (A)	79 dB (A)	79 dB (A)	79 dB (A)	79 dB (A)	79 dB (A)	79 dB (A)	79 dB (A)
Machine weight, kg approx.	170	170	190	170	170	240	240	170	200	280
<b>Arch dimension</b>										
(width x height)										
– 300 x 600 mm									• (65S)	
– 500 x 400 mm	•			•	•					
– 650 x 500 mm	•	•	•			•	•	•	•	•
– 850 x 650 mm			•			• (50A/55A)	• (50A/55A)			
– 850 x 850 mm			•				• (50A/55A)	•		
– 850 x 1250 mm								•		
– 850 x 1550 mm								•		
– 1250 x 500 mm			•							
– 1250 x 850 mm			•					•		
– 1550 x 500 mm			•				• (56/57)			
<b>Plastic strap (PP) <sup>[1]</sup></b>										
Width										
5 mm 372.605.585	•			•		•				
6 mm 324.106.560**	•			•		•				
9 mm 371.609.555		•	•		•		•	•	•	•
9 mm 323.109.540***					•					
12 mm 371.612.540		•	•		•		•	•	•	•
12 mm 323.112.530***					•					
Strap coil, inside/outside Ø	200/430	200/430	200/430	200/430	200/430	200/430	200/430	200/430	200/430	200/430
<b>Packages</b>										
Min. width, mm from	100	100	100	50	50	100	100			
Min. width x height, mm from				50x5	50x5			100x100	100x100	100x100
Min. length, mm						150	150			
Package weight, max. kg	35	35	35	35	35	35	35	****	****	35
<b>Options</b>										
On request	•	•	•	•	•	•	•	•	•	•

<sup>[1]</sup> Strap thickness: 0,35 - 0,60 mm

\* Without package movement

\*\* Interflex, thickness 0,50 mm

\*\*\* Superflex, thickness 0,45 mm

\*\*\*\* Depending on conveyor system

# Make your products feel safe

---



Own development and manufacturing



Proven solutions for various industry segments



Worldwide sales and service network

[www.strapex.com](http://www.strapex.com)